



How to find us:

Our offices are conveniently situated at Telford Centre, making them easily accessed by car, train and bus services.

Our nearest car park is the Cherry Pink Multi-storey, just across the bridge from us.

We are here, 2nd floor
Hazledine House.

Cherry Pink Multi-storey
car park



Telford & Wrekin CVS

Suite 12 & 15 Hazledine House
Central Square
Telford Centre
Telford
TF3 4JL

Tel: 01952 916035

www.telfordandwrekin cvs.org.uk

Registered Charity Number: 702589

There is also a car park located near Hazledine House in Central Square, this car park is strictly for dropping off and picking up with a maximum stay of 10 minutes, if you wish to stay any longer you will need to use the Pay & Display machine to prevent incurring a parking fine.

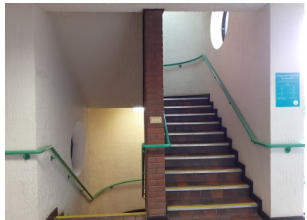
All car parks are the responsibility of Telford Centre and not Telford & Wrekin CVS.



Directions to Hazledine House from Telford Centre



- From Telford Centre walk down from Poundland towards the exit, walk over the bridge into Hazledine House.



- As you walk through you will see the stairs in front of you, which will take you to floor 2,



- Follow the signs for Telford & Wrekin CVS and you will see the reception door to Telford & Wrekin CVS, there will be someone to welcome you on reception.

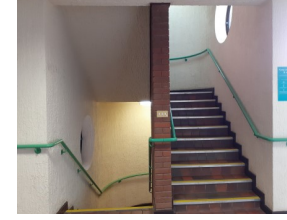


- If you come up in the lift press the button for floor 2.

Directions to Hazledine House from Cherry Pink carpark



- If you are coming in via the Cherry Pink multi storey carpark from floor 2, walk over the bridge into Hazledine House .



- The stairs will be on your left, go up to floor 2.



- Follow the signs for Telford & Wrekin CVS.

Our projects include:















BBO Shropshire
where will your journey take you?





European Union
European Social Fund



The project is funded by The National Lottery Community Fund and the European Social Fund.